

Brighton Blueprint

Board of Education updates
2023-2024



Priority Areas



**Mental
Health &
Wellness**

**Academic
Excellence**

**The Student
& Family
Experience**

**Staff Support &
Collaborative
Culture**

**Safety and
Planning for the
Future**

Mental Health and Wellness

BCSD will support the development of the whole child by creating learning environments that foster overall mental health and wellness-socially, emotionally and physically.

BCSD will provide an inclusive environment to address the individual needs of each child and to support the attainment of each student's goals.

Mental Health and Wellness

- URM Mental Health Partnership



- Expanded School Mental Health Initiatives
 - Vicarious Trauma and Compassion Fatigue - "Taking Care of those Taking Care of Others"
 - QPR (Question, Persuade, Refer) Suicide Warning Signs Training
 - Emotional First Aid
- Districtwide Overview Superintendent's Conference Day
- On site services increased 2 ½ days per week 6-12
- Specific building support K-12 consultation

Mental Health and Wellness

- **SEL 2023-2024 implications**
 - Leadership Team analyzed data in summer by building including narrative data to make building specific plans.
 - Reviewing next administration steps and best resources moving forward.
- **Continue to build internal capacity and training with focus on Monique Burr and Second Step implementation.**
 - Building staff attending refresher training in Spring.

Mental Health and Wellness

- Continue to develop consistent MTSS process with focus on social emotional/behavioral and school avoidance tiered intervention including systems for identification of student need, progress monitoring, documentation and communication of services.
 - District MTSS handbook completed summer 2023.
 - Updates previewed opening day building staff meetings.
 - Transition to district wide Teams to manage files and improve consistency between buildings.



Academic Excellence

BCSD will provide each student coursework that is challenging to promote individual growth and critical thinking skills. Each learner will be supported to foster resiliency, maximize their potential, based on needs and interests. We will focus on culturally responsive and sustaining education practices by celebrating and accepting differences, collaborating, and supporting a growth mindset for all to cultivate curiosity and find the joy in learning.

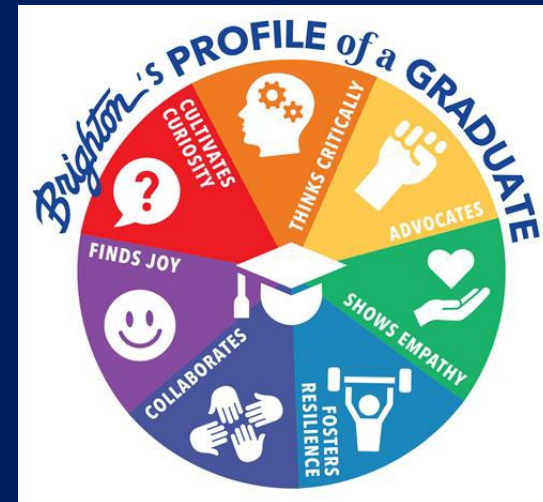
Academic Excellence

Transfer Goals – Continuing our work this school year!

- Last year we created Transfer Goals for all content areas
- This year we will focus on one Transfer Goal for each content
 - Superintendent's Conference Day
 - Curriculum Council

Profile of a Brighton Graduate

- Curriculum Nights, Classrooms and School Buildings, PTSA, Video



Academic Excellence

Culturally Responsive Professional Learning

- Work with Re-Center on Superintendent's Conference Day
- Equitable Grading Practice work at BHS

Math Data Review post COVID

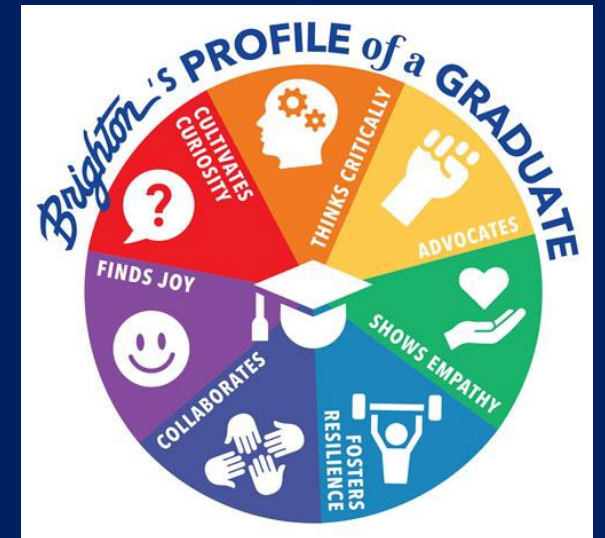
- Work with Math Leaders
- Data and Curriculum Review



Academic Excellence

Implementation of rigorous K-5 Tier 1 ELA Program

- Wit and Wisdom – Grades 1-4
- UBD designed rigorous units in Grades 5 (Summer 2023)
- Kindergarten writing alignment
- Continuing training and support:
 - LETRS for all K-5 teachers
 - Road to Reading for phonics instruction



The Student & Family Experience

BCSD will foster an environment where each student and family are seen, heard, valued, supported, and safe to engage within our school community.



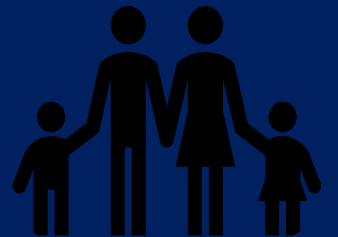
The Student & Family Experience

Opening of School Activities for Students and Families

- Curriculum Nights, Movie Nights, Bingo, Activity Nights, Homecoming, New Family Reception
- Multicultural Club- Volunteer Families Sharing Cultural Backgrounds

New Students and Families

- Building level teams reviewing processes for new students and families
- Work with PTSA Parent Liaisons



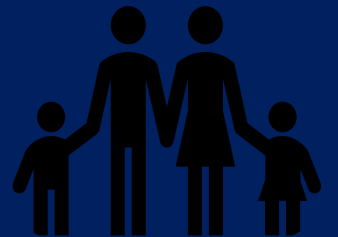
The Student & Family Experience

Student Interactions

- Child watch and educational internships with students of Future Teachers Club
- Prepworks Tutoring Club and TCMS After School Tutoring

Parent Feedback

- School Based Equity Teams still reviewing data from the most recent Panorama survey data
- Reviewing our systems to gain feedback from students and parents



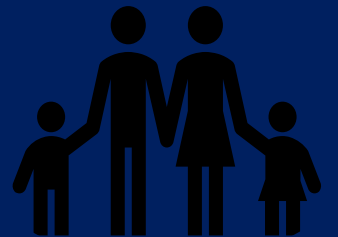
The Student & Family Experience

Student Transitions

- Tutoring Center Entry Meetings with Suspended Students
- Check-in meetings with new Urban-Suburban students and families

Student Access

- Transportation- U/S Students, Tutoring Center, District Events
- Brighton Your Wardrobe
- Field Trips



Staff Support & Collaborative Culture

BCSD will utilize community and district-based support to create a culture and environment that allows staff the opportunity to build connections, feel valued, and collaborate with each other to foster a sense of belonging and joy.

Staff Support and Collaborative Culture

- Faculty and Staff Collaboration
 - Faculty meetings start with time for faculty to connect more deeply with their colleagues
 - Faculty and staff continue to have time to work with their department, team, or PLC
 - Superintendent's Conference Day had collaboration time built into the day for faculty and staff to work together on building level initiatives. Lunch and desserts were provided to allow for additional time to connect
- Analyze Panorama Data and other building specific faculty and staff feedback to address building needs
 - The Leadership Team worked in the summer to analyze the Panorama survey data to determine action steps for the building. These action steps guide the work of committees and different teams. As a follow up, taking time this fall to review all the narrative feedback that was provided.
 - SBET and other building level committees are diving deeper into the Panorama data focusing on fostering a sense of belonging and connectedness for faculty/staff, students, and community
 - BHS gave staff time at the faculty meeting to write good news postcards to students

Staff Support and Collaborative Culture

- Foster joy by creating opportunities for all faculty and staff to connect
 - Each buildings' Wellness Committee is continuing to develop and implement opportunities for faculty and staff to connect
 - Back to school picnics and events, pickleball nights, monthly breakfasts, and coffee hours,
 - Schoology page- What's Bruin?
 - Staff competitions like door decorating and guess the teacher in their childhood Halloween costume
 - Staff appreciation celebrations from building administration
- Build community through restorative practices
 - Over the summer, the Leadership team participated in a PD with BOCES related to restorative practices
 - As a follow up, the leadership team worked to identify targeted areas related to restorative practices that each building will address this school year.
- Support staff through clear and consistent communication and follow through

Safety and Planning for the Future

BCSD will establish standards on school safety and security through continuous risk assessment analysis of all school systems. BCSD will develop details for facilities master planning considering modernization and sustainability.

Safety and Planning for the Future

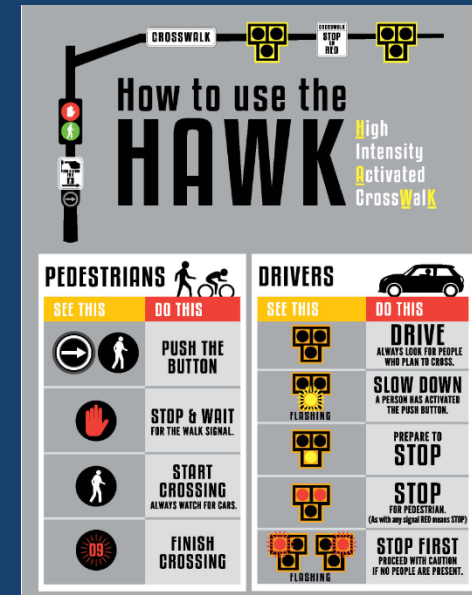
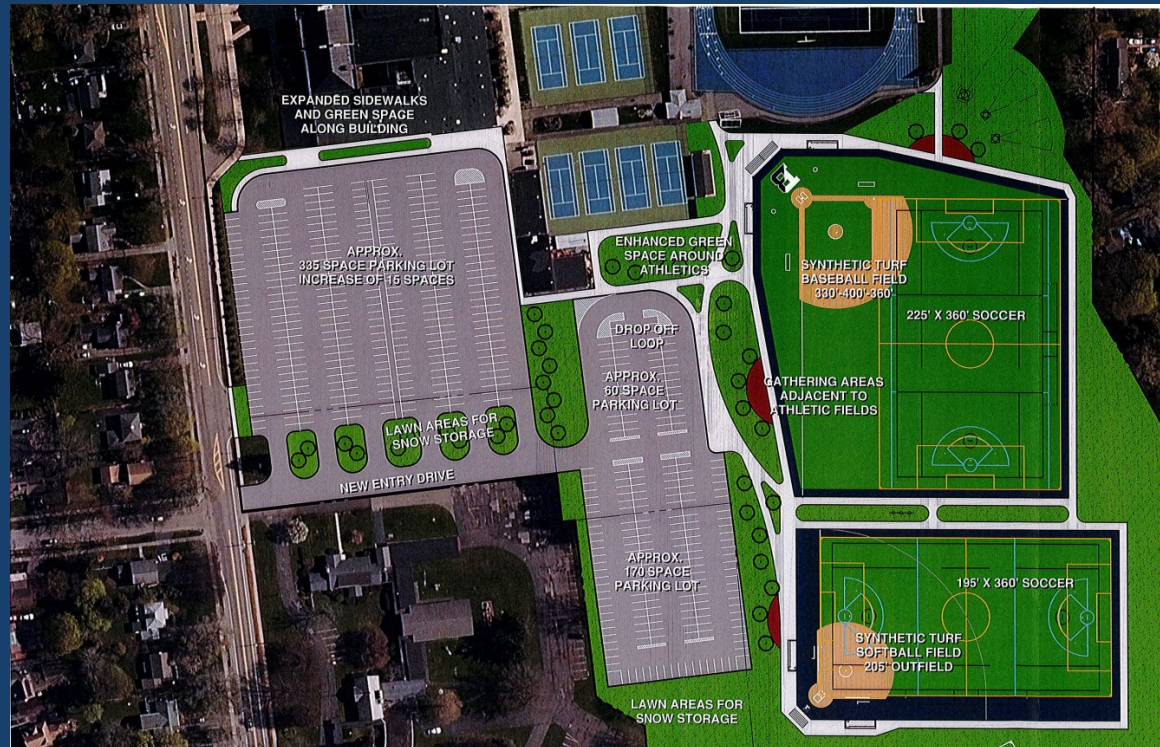
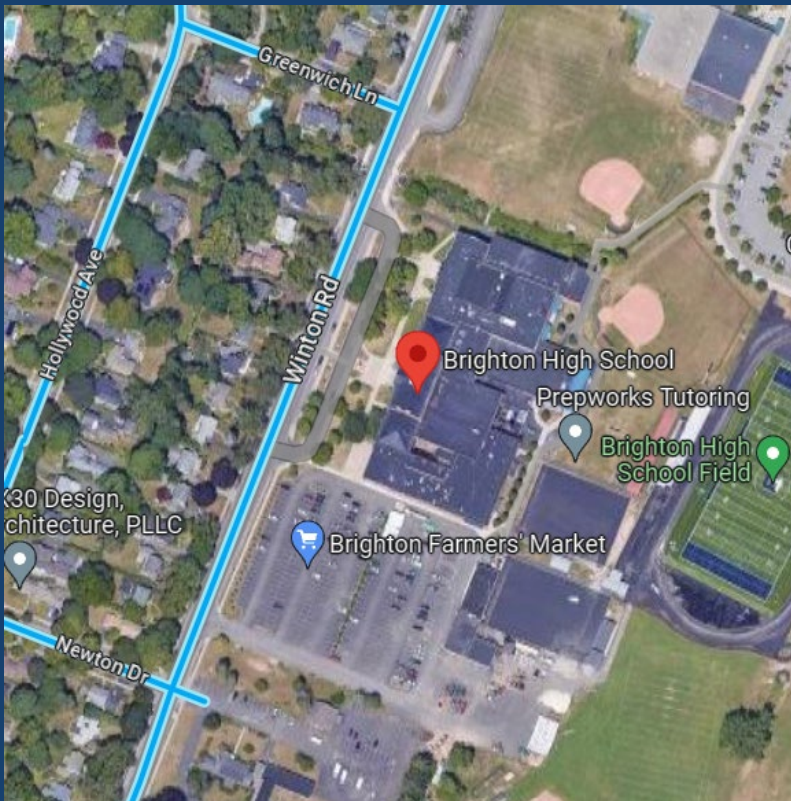
- Adoption and dissemination of the SHELL card
- Emergency communication system installed in all four schools
- Updated and refined procedural manual for security guards
- Developed procedures for administrators for student altercations, searches and reported observations that a student may be in possession of a “weapon”

Safety and Planning for the Future

- Develop professional development program for guards, paraprofessionals and clerical on Superintendent's Conference Days
- Partnered with Buildings & Grounds and Technology to review camera locations and functionality to development master plan for purchasing and replacement.

Safety and Planning for the Future

- Developing Phase II of the 2023-24 Capital Project:



Safety and Planning for the Future

- Developing Phase II of the 2023-24 Capital Project:

